

# Resilience of Health Systems

MOMENTUM Integrated Health Resilience

---

Mesrak Nadew, MD, MSc, Resilience Lead-Health

From Crisis to Resilience: Progressing Health System Resilience in Fragile and Conflict Affected Contexts

November 17, 2021



**USAID**  
FROM THE AMERICAN PEOPLE



# Outline of the Presentation




Health Systems in Fragile Settings



Lessons Learned from The COVID-19 Pandemic



Approaches and Innovations for Health System Resilience



**MOMENTUM Integrated Health Resilience** is a USAID Flagship Global project working in fragile and conflict affected settings. We work to improve access to and availability of high-quality, respectful, and person-centered MNCH/FP/RH care and coordination between development and humanitarian organizations to strengthen the resilience of individuals, families, and communities. MIHR currently operates in Burkina Faso, DRC, Mali, Niger, South Sudan, Sudan, and Tanzania.

# Findings of Assessments in South Sudan and Mali

Health facilities in fragile settings are often:

- Lacking basic infrastructure
- Targets of looting and destruction
- Staffed with unpaid health workers
- Faced with shortage of commodities
- Without functional equipment
- Subjected to relocation due to frequent disasters and conflicts resulting in interruption of services.



# Health Outcomes in Fragile and Conflict Context

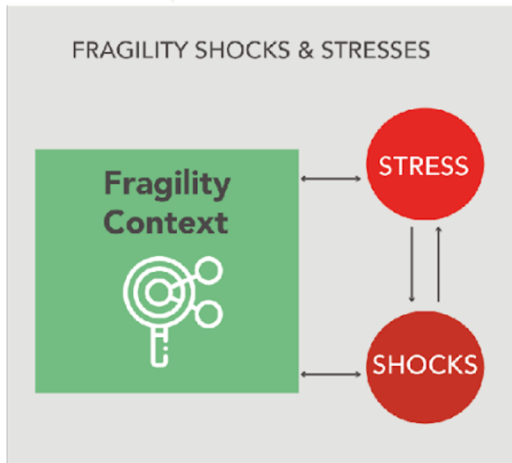


Globally, 60% of maternal mortality, 53% of mortality of children under five years of age, and 45% of deaths of neonates are in settings of conflict, displacement and natural disasters.

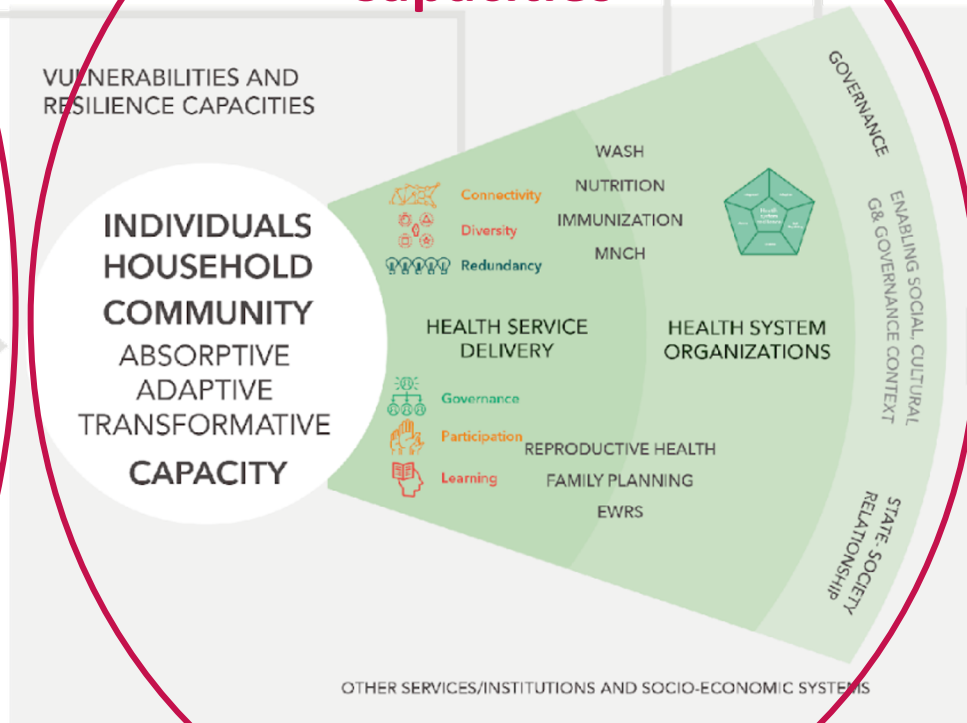
# Health Resilience Framework

FEEDBACK LOOPS

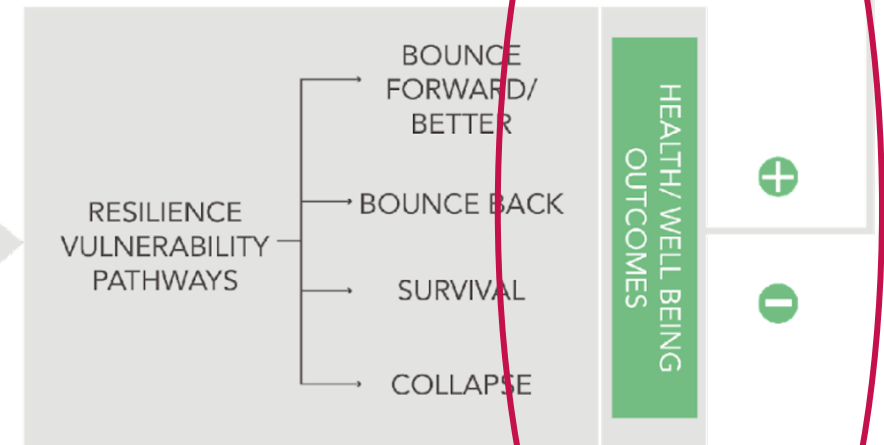
Exposure to S&S



Resilience Capacities



Health & well-being Outcomes

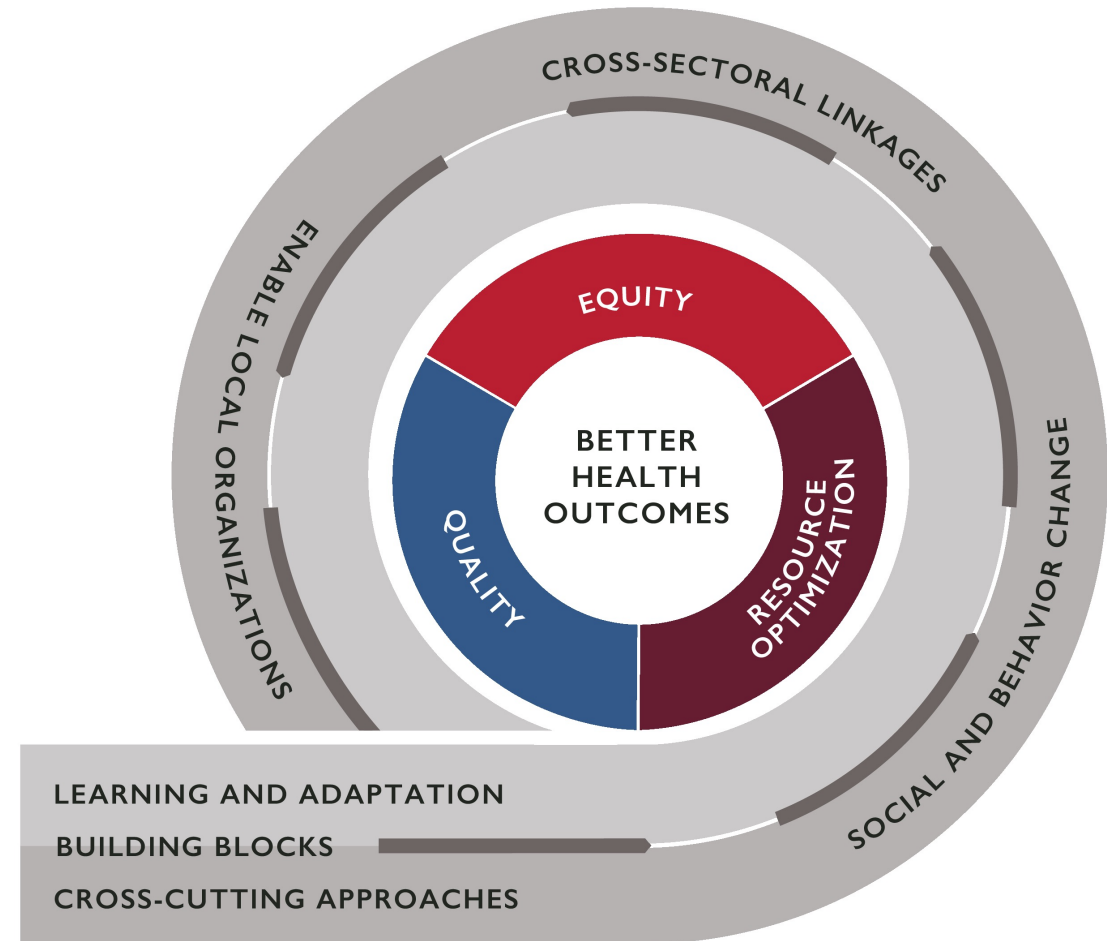


# Health Systems Resilience

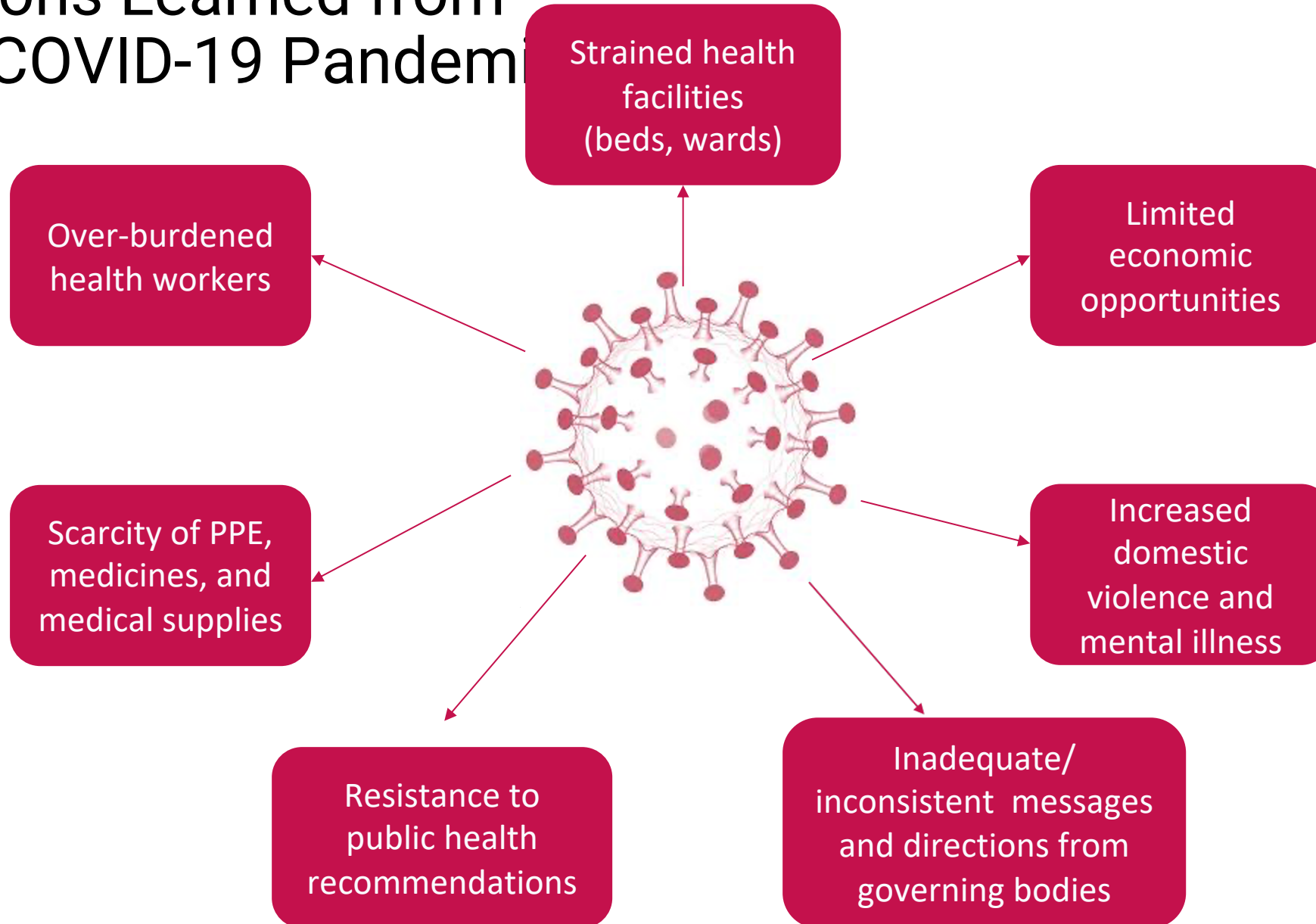
The ability of a health system to **mitigate, adapt to, and recover from shocks and stresses**. A resilient health system can ensure the continuity of existing health care and has the capacity to scale up or adapt services to address the shock and stresses.

Building back better and forward

<https://www.usaid.gov/global-health/health-systems-innovation/health-systems/promoting-resilience>

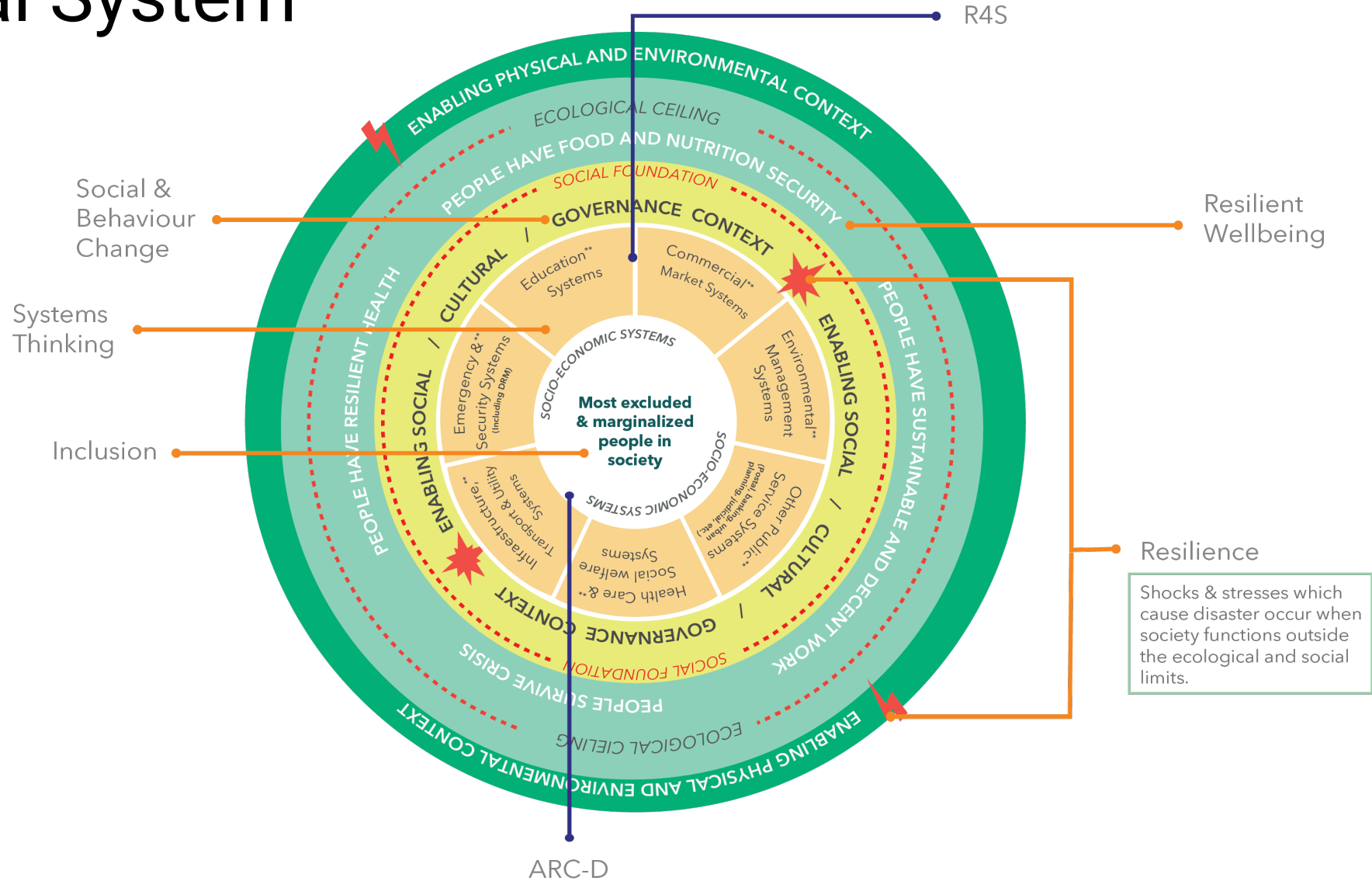


# Lessons Learned from The COVID-19 Pandemic



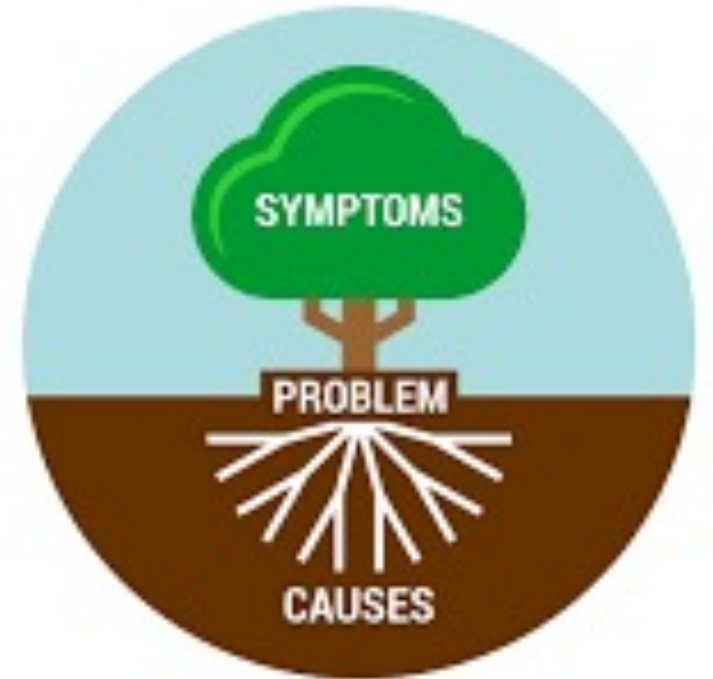


# Resilient Health System is a Function of Resilient Social System



# Understand the Context

- Assessment of the Early Warning and Response System
- Fragility Analysis
- Continuous monitoring of context
- Existence of coordination mechanisms within the Humanitarian- Development-Peace Nexus
- Risk landscape analysis
- Resilience audit
- Ask, listen, observe and value local knowledge/skill



# Global Investments Are Needed for Health System Resilience

1. Health infrastructure (alternative energy, sustainable facility buildings)
2. Health workforce (recruitment, training, deployment, retention)
3. Health equipment and supplies (local and regional manufacturing initiatives)
4. Communication (transport, networks, cross-sectoral connection, strengthen traditional assets)
5. New technologies that are responsive to the needs of fragile settings (energy efficient equipment, harness local resources, remote sensing when feasible)



## TECHNOLOGY AND HEALTH SYSTEMS RESILIENCE

Inclusive Technology that is adaptable to fragile environments

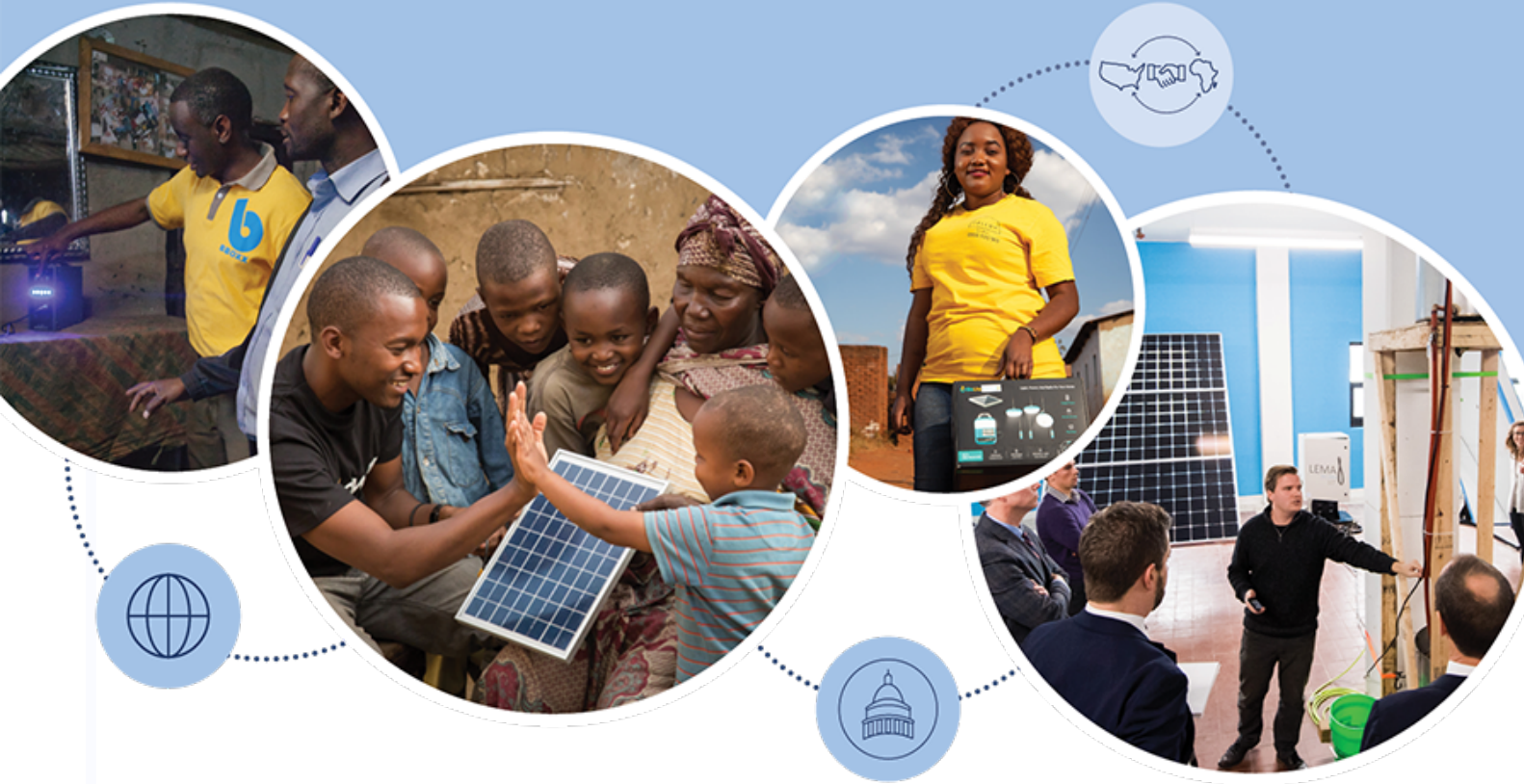
(access to knowledge, skills, and products)

Remote sensing when feasible

Integrating the formal and informal sector

Integrating health, education, livelihood, market, policy (resources and information)

Country ownership as key to sustainable technology solutions





THANK YOU