




Distribution of Syrian seasonal migrant agricultural workers tent settlements by districts in the Adana Plain (number)


	Karataş	Yüreğir	Yumurtalık	Seyhan	Total
Tent settlements 	12	19	6	2	39
People 	6903	4568	1410	576	13457
Children 	4839	2875	607	336	8657


244,677

There are **1.5 million** Syrian migrants in Adana.
%11 of Syrians in Turkey live in Adana.

The population of Syrian seasonal migrant agricultural workers in  tent settlements in the Adana Plain was found to be **9.806**.

Total number of tents, people and children in 39 settlements

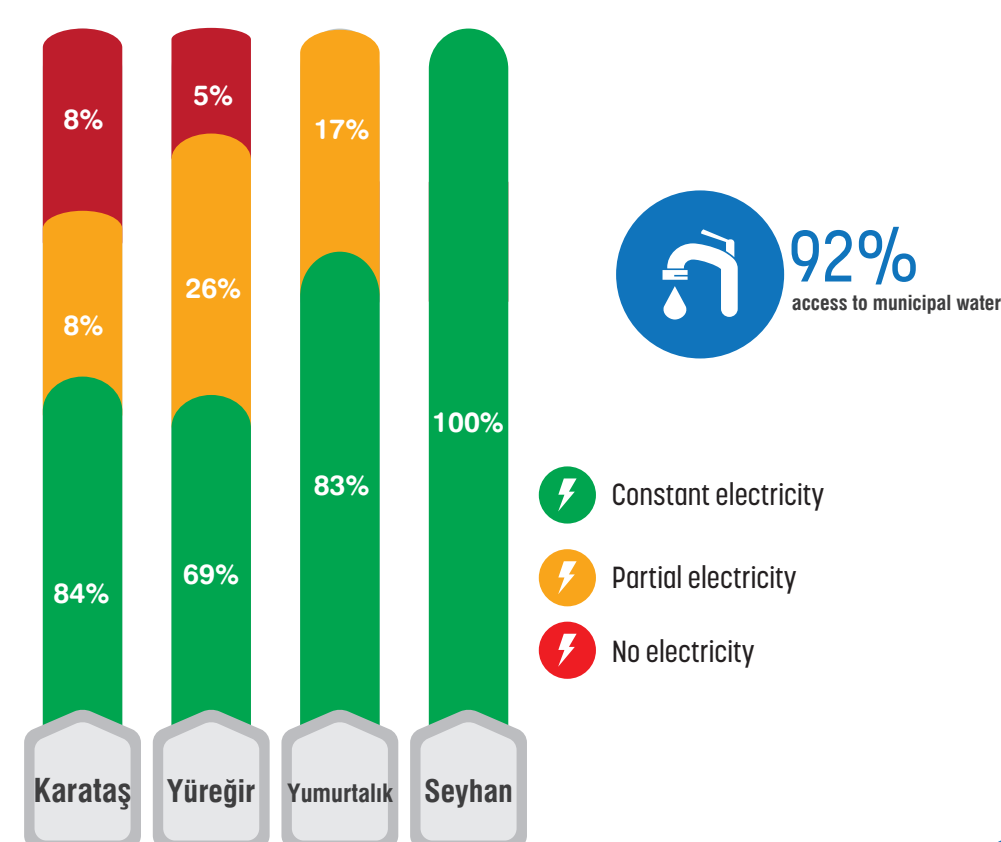
	Number	%
Number of tents (Syrian)	1453	74.5
Number of tents (TR)	497	25.5
Total number of tents	1950	100

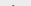
	Number	%
Number of people (Syrian)	9806	72.9
Number of people (TR)	3651	27.1
Total number of people	13457	100

	Number	%
Number of children (Syrian)	6413	74.1
Number of children (TR)	2244	25.9
Total number of children	8657	100



The access rates of Syrian seasonal migrant agricultural workers c
in the Adana Plain to water and electricity in their living quarters.



 **Temporary tent settlement**
In the field study carried out in Adana in November 2019 for the determination of the current situation of seasonal agricultural workers, it was determined that the workers in these neighborhoods were accommodated in temporary tent settlements.

- Figure 1 illustrates the relationship between various factors and the risk of infection. The diagram is organized into three main columns. The left column lists 'Peritable water resources' (Tanker, Water pump, Tapwater, Water channel, Coisson water, Other (consalter, thermos)) and 'Usable water resources' (Tanker, Water pump, Tapwater, Water channel, Coisson water, Other (consalter, thermos)). The middle column lists 'Temporary tent settlement with a fixed population', 'Temporary tent settlement with decreasing population', and 'Nafusu antan geci (cod yerlesim)'. The right column lists 'Low risk tent settlement', 'Moderate risk tent settlement', and 'High risk tent settlement'. Arrows indicate that water resources and settlement types influence the risk level. A separate box on the right lists 'Chronic illness', 'Visually impaired', 'Physically disabled', 'Mentally disabled', and 'Hearing impaired', with arrows pointing to the risk levels, indicating these factors also influence the risk.

How was this map prepared?

In the field study conducted in the Adana Plain by the Development Workshop experts on November 2019 and January 2020, 39 tent settlements were visited, the current situation analysis was made in these settlements and focus group discussions were held with the Syrian seasonal migrant agricultural workers living here. The data of the settlements were both processed on the map and recorded on questionnaires. The data on the map was created based on the statements of the inhabitants of the region. The analysis made with the data obtained from these interviews are reflected in the current situation map.

[illegible]

Development Workshop Archive, Adano 201

Periods of residence of Syrian seasonal agricultural workers in their settlements

	26% of workers 1-2 years
	28% of workers 3-4 years
	46% of workers at least 5 years

How long have Syrian seasonal migrant agricultural workers been in this settlement?


District	Average-year
Karataş	3,6
Seyhan	5
Yumurtalık	3,8
Yüreğir	3,7
Total	3,9

Provinces where Syrian seasonal migrant agricultural workers migrated from the Adana Plain



Languages spoken 40,9 %

languages spoken



Language	Percentage
Turkish	40.9%
Kurdish	15.9%
Arabic	43.2%

Where did the Syrian seasonal migr workers come from to Adana Plain?

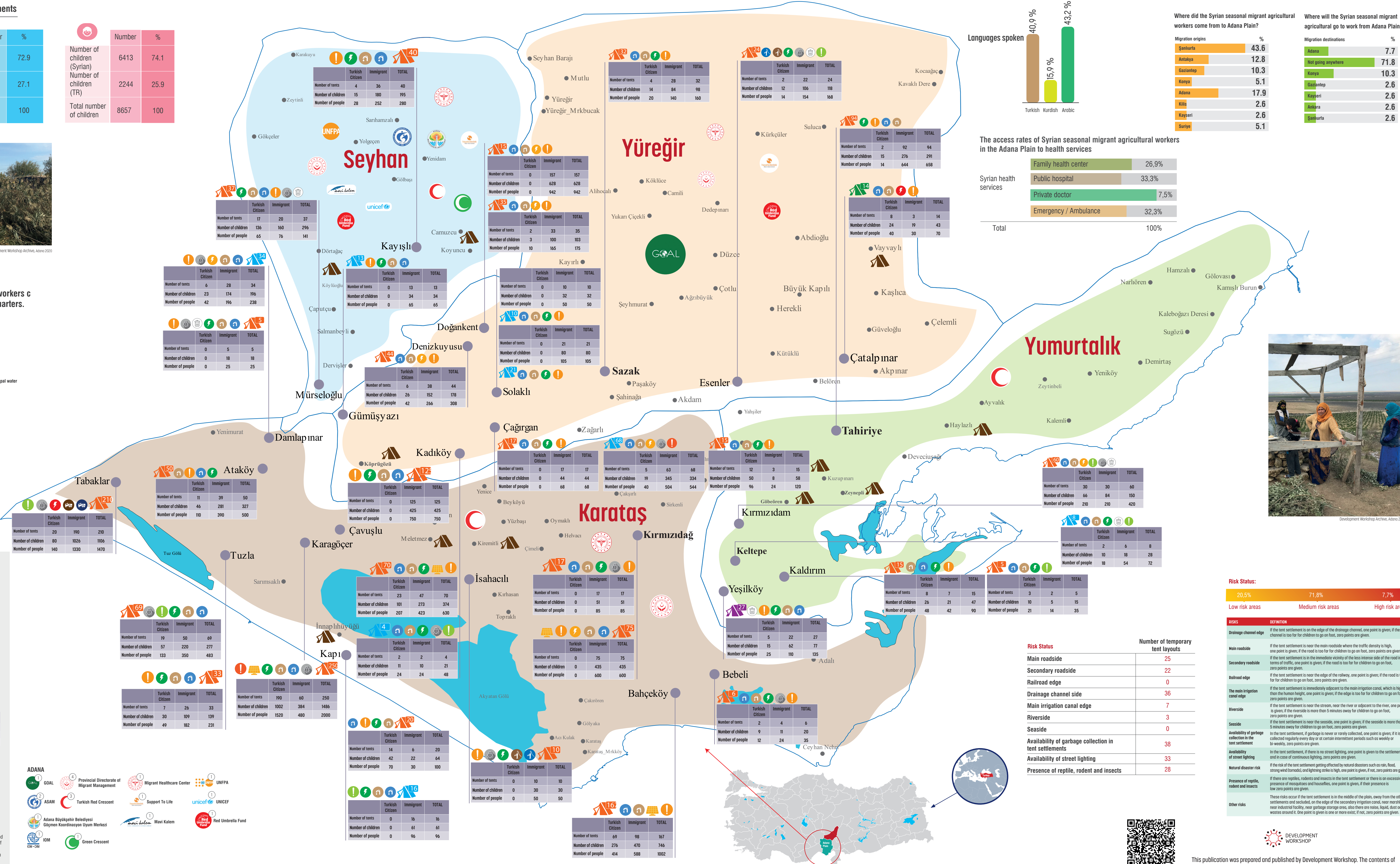
Migration origins	
Şanlıurfa	43
Antakya	12
Gaziantep	10
Konya	5
Adana	17
Kilis	2
Kayseri	2
Suriye	5

Where will the Syrian seasonal migrant agricultural go to work from Adana Plain

Migration destinations	%
Adana	7.7
Not going anywhere	71.8
Konya	10.3
Gaziantep	2.6
Kayseri	2.6
Ankara	2.6
Şanlıurfa	2.6

The access rates of Syrian seasonal migrant agricultural workers in the Adana Plain to health services

Healthcare facility	Percentage
Family health center	26,9%
Public hospital	33,3%
Private doctor	7,5%
Emergency / Ambulance	32,3%



Risk Status:

Risk Level	Percentage
Low risk areas	20,5%
Medium risk areas	71,8%
High risk areas	7,7%

INDICATOR	DEFINITION
Drainage channel code	If the test segment is an off-ramp of the drainage channel, assign a given, if the channel is used for children to go home, zero points are given.
Main road code	If the test segment is not the main road where the traffic flows in the direction of the test segment, if the road is not used for children to go home, zero points are given.
Secondary road code	If the test segment is in the immediate vicinity of the less intense side of the road in the direction of the test segment, if the road is not used for children to go home, zero points are given.
Railroad code	If the test segment is not the edge of the railway, one point is given; if the road is not for children to go home, zero points are given.
The main irrigation canal code	If the test segment is immediately adjacent to the main irrigation canal, which is higher than the test segment height, one point is given; if the edge is not for children to go home, zero points are given.
Riverside	If the test segment is next to the river, near or adjacent to the river, one point is given; if the test segment is more than 100 m from the river, zero points are given.
Seaside	If the test segment is next to the seacoast, one point is given; if the seacoast is more than 50 m from the test segment, zero points are given.
Availability of garbage receptacles	If the test segment is garbage receptacles or rarely collected, one point is given; if it is not, zero points are given.
Availability of street lighting	If the test segment is in the day or certain street lighting periods such as early in the morning, one point is given; otherwise, zero points are given.
Natural disaster risk	If the risk of the test segment affecting effect by natural disasters such as rain, flood, strong wind, typhoon and lightning strikes is high, one point is given; if not, zero points are given.
Presence of insects and reptiles	If there are reptiles, rodents and insects in the test segment or there is an occurrence pattern of mosquitoes and houseflies, one point is given; if not, zero points are given.
Other risks	This risk index is an off-ramp of the test segment in the middle of the path, away from the test segment, if the test segment is in the edge of the secondary irrigation canal, near marshy areas, pond, river, main irrigation canal, power garbage storage area, etc. there are noise, flood, typhoon, etc. one point is given; otherwise, zero points are given.

Risk Status

Main roadside	25
Secondary roadside	22
Railroad edge	0
Drainage channel side	36
Main irrigation canal edge	7
Riverside	3
Seaside	0
Availability of garbage collection in tent settlements	38
Availability of street lighting	33
Presence of reptile, rodent and insects	28



This publication was prepared and published by Development Workshop. The contents of this publication are the sole responsibility of Development Workshop.



DEVELOPMENT
WORKSHOP